



*Four generations of alpaca expertise*

*softest yarn ever*

[www.mistialpaca.com](http://www.mistialpaca.com)

## Hand Paint Sock yarn

50% superfine alpaca, 30% merino wool, 10% silk, & 10% nylon

436 yards, 100 gram hank, 4 ply, Fingering Weight, 7 sts per inch, needle US #2

**Misti Hand Paint Sock Yarn** blends superfine alpaca, fine Merino wool, silk, and nylon to create a superbly soft, resilient, and durable sock yarn. In a 4 ply fingering weight.

HS26

Colca Canyon



HS25

Robin Hood



HS24

Tree Frog



HS23

Highlands



HS22

Safari



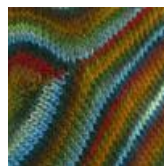
HS21

Northern Lights



HS20

Slippery Jack



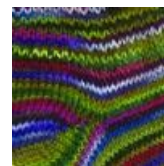
HS19

Reggaeton



HS18

Manu



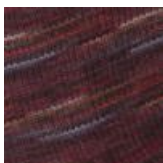
HS09

Seattle



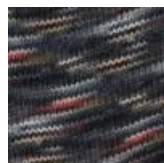
HS11

Senta



HS12

Shadow



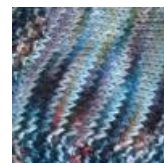
HS10

Azulichen



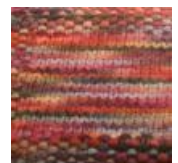
HS08

Marino



HS07

Miriam



HS04

HS03

HS02

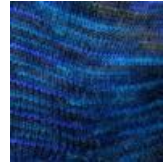
HS01

Taos

Birds in Paradise

Blood lines

Blues in the Night



Misti International, Inc. All rights reserved.  
Copyright © 2010 All Rights Reserved.