



PATTERNS LUXURY COLLECTION
IS AVAILABLE AT WWW.MISTIALPACA.COM

MISTI INTERNATIONAL, INC

Nordic Leg warmers, Mittens, and Scarf

Read Instructions Completely before you start!

Skill Level: Intermediate



Sizes

One Size

Materials

Yarn required:

Misti Baby Alpaca Sport (100% baby alpaca, 50 g = approx 146 yards).

Black #GR7000: 4 skeins

Natural White #NT100: 5 skeins

Lipstick Sport (red) #RJ2105: 12 skeins

Knitting needles: Circular and double pointed US No. 3 and 4 (3 & 3.5 mm)

Gauge/Tension

Gauge: 24 sts St st with 3.5 mm (US No. 4) = 10 cm (4 in).

Adjust ndl / hook sizes as needed to obtain correct gauge

Instructions

SCARF

With red and 3 mm (US No. 3) ndl cast on 104 sts. Join and work according to chart for scarf. After chart is finished, change to red and cont in St st until work meas 112 cm (44 in) or desired length. Work pattern according to chart BUT top downwards. BO. Sew both edges tog.

Fringe:

With red cut approx 18 cm (7 in) long strands of yarn. Tie fringe with 5 strands of yarn folded in two (= 10 strands in each finished fringe). Tie fringe along both short edges with approx 1 cm (½ in) in-between each fringe.

Embroidery:

With red, embroider "X" st at center of snowflakes as shown on chart for scarf. See photo.

MITTENS

Left mitten:

With red and 3 mm (US No. 3) double pointed ndl cast on 48 sts. Join and work [k2, p2] rib for 8 cm (3¼ in). Change to 3.5 mm (US No. 4) ndl. Work chart A for mittens, then work chart B for mittens and inc for thumb according to chart. Note: Some sections of the chart can be embroidered in duplicate st on finished work. Cont to inc until there are 11 sts for thumb = 56 sts on ndl. Next row, mark the thumb opening as follows: Work the 11 sts for thumb with waste yarn in contrast color. Transfer these 11 sts back onto the right ndl and work according to the pattern. Finish chart, dec for top of mitten as follows: K1, sl 1, k1, pssso, work until 3 sts remain, k2tog, k1. Repeat this dec every rnd until 4 sts remain on ndl. Cut yarn and pull through sts and fasten well.

Thumb:

Remove waste yarn and place the sts onto 3.5 mm (US No. 4) double pointed ndl and pick up 11 sts extra at each side = 22 sts. Join and work according to chart for thumb. Dec at the top as indicated on chart

Right mitten:

Cast on and work right mitten in same manner as on left mitten, BUT place the thumb sts at the other side = after the first 4 sts on chart.

Embroidery:

With black, embroider "X" st at center of snowflake as shown on chart B for mittens. See photo.

LEGGINGS

With black and 3 mm (US No. 3) ndl cast on 72 sts. Join and work [k2, p2] rib for 3 cm (1¼ in). Change to 3.5 mm (US No. 4) ndl. Work pattern according to chart for leggings. Change to black and work [k2, p2] rib for 3 cm (1¼ in). BO.

Embroidery:

With red, embroider "X" st at center of snowflakes as shown on chart for leggings. See photo on page 3.

free on the web!

pattern 914



This Pattern has been tested for accuracy, Misti International, however, cannot accept responsibility for typographical errors or misinterpretation of Instructions.

Misti International Alpaca Yarns > P.O.Box 2532 > Glen Ellyn, IL 60137 > email >> info@mistialpaca.com > 1-888-776-9276.

Copyright 2005 Misti International, Inc.

Page 1 of 3

Chart B for Mittens

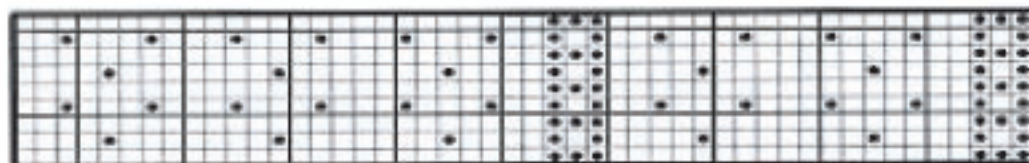
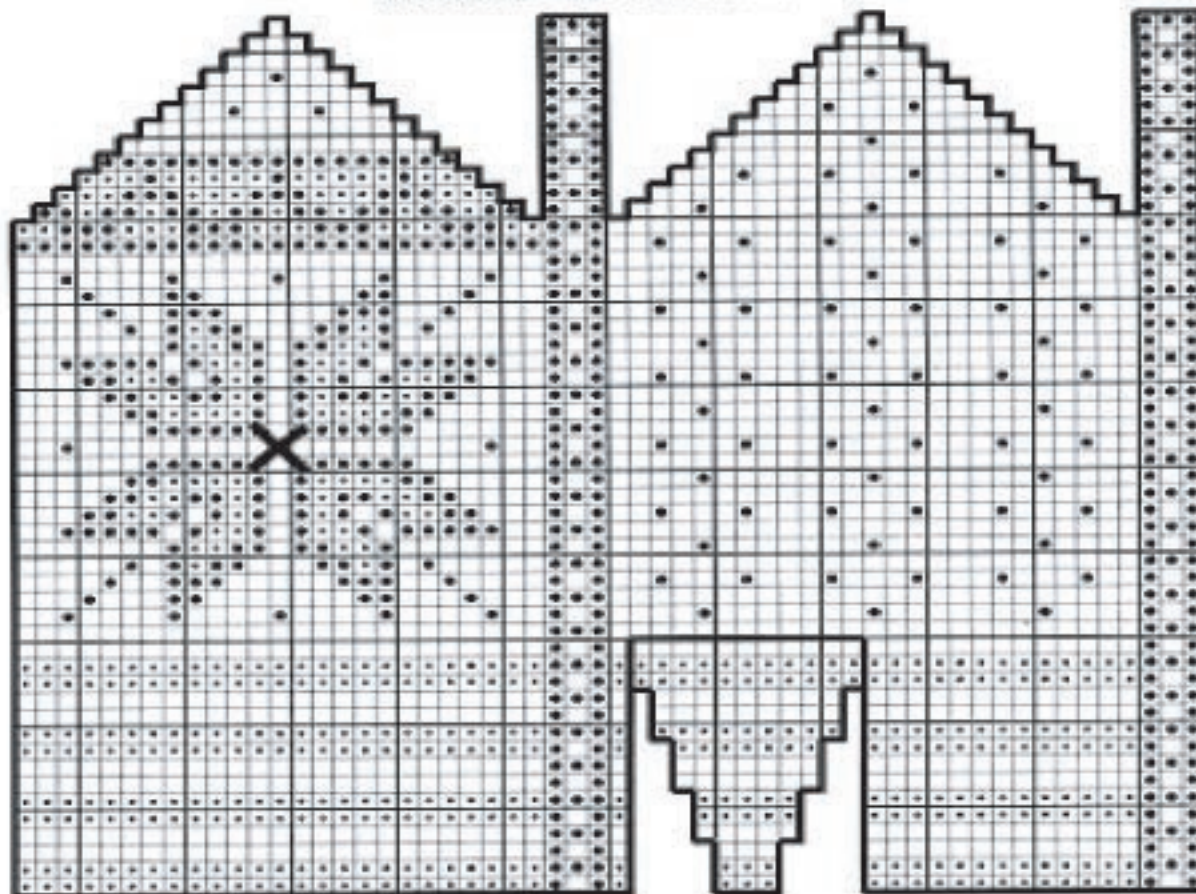


Chart A for Mittens

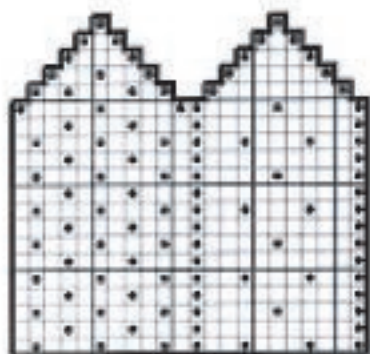


Chart for thumb

- = Red RJ2105
- = Black GR7000
- = White NT100

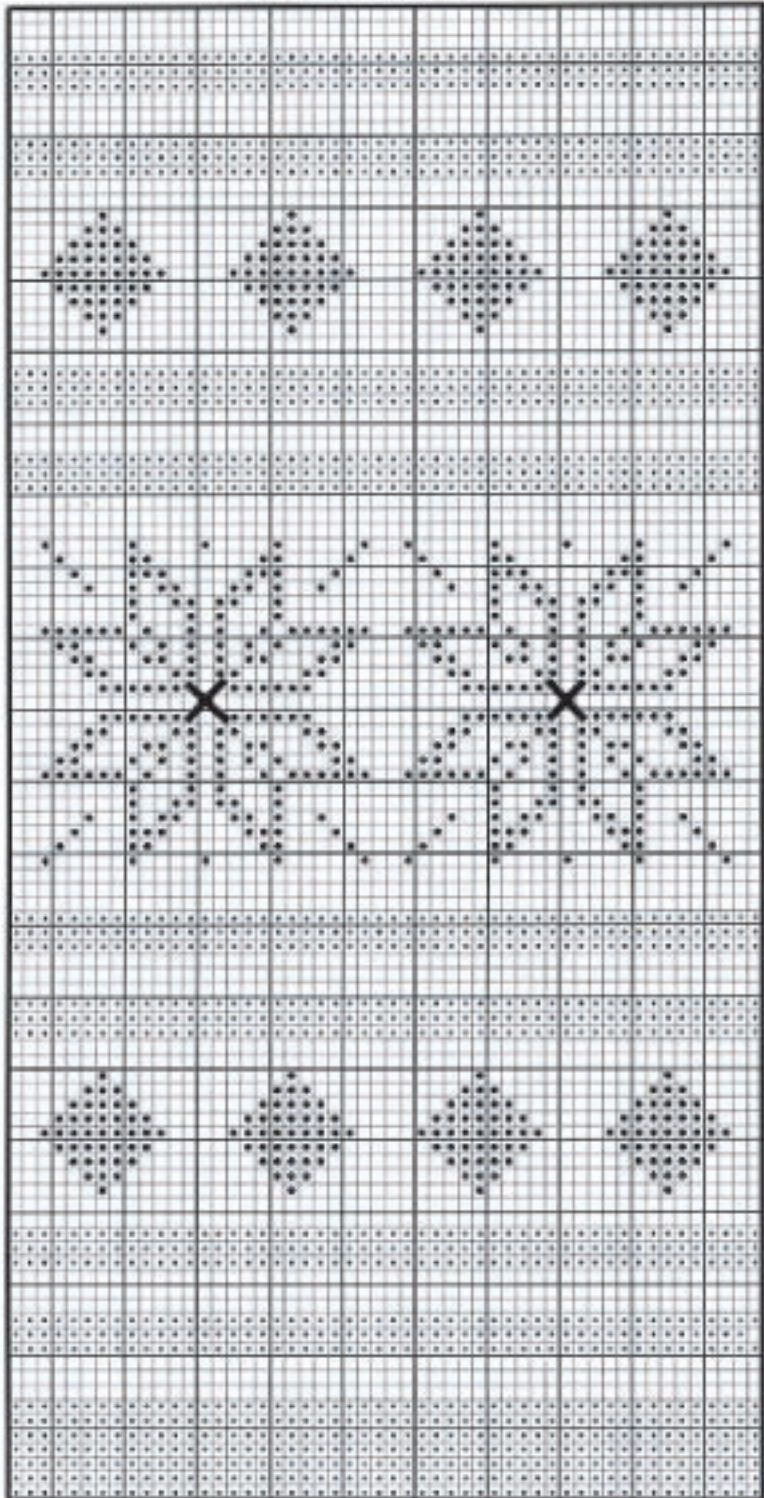


Copyright 2005 Misti International, Inc.

Misti International Alpaca Yarns > P.O.Box 2532 > Glen Ellyn, IL 60137
 > email >> info@mistiAlpaca.com > 1-888-776-9276.

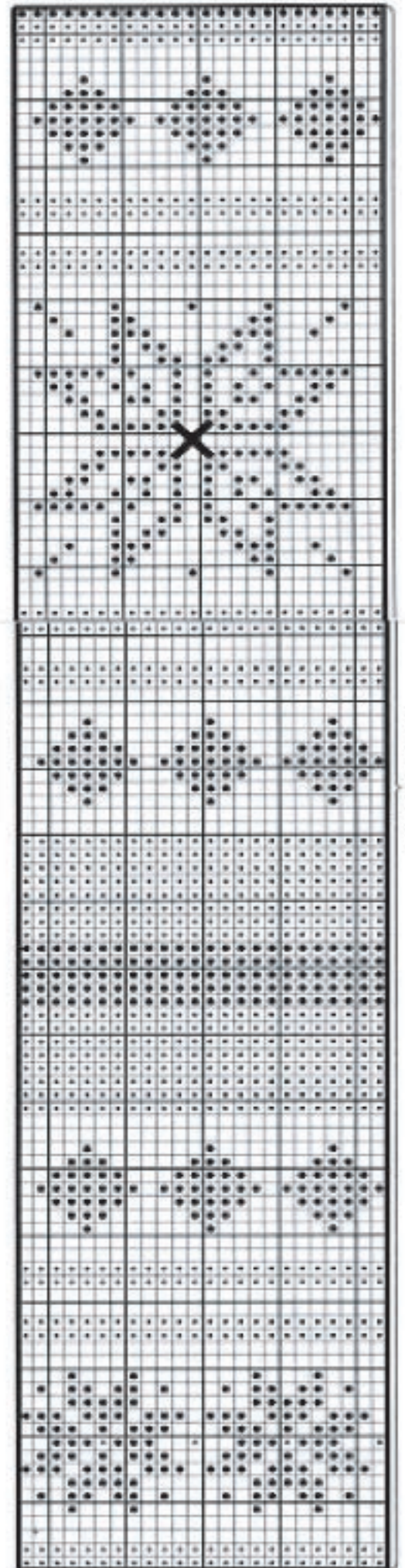
This pattern has been tested for accuracy,, Misti International, however, cannot accept responsibility or typographical errors or misinterpretation of instructions.

Chart for Scarf



Repeat

Chart for Leggings



Repeat

Misti International Alpaca Yarns > P.O.Box 2532 > Glen Ellyn, IL 60137
 > email >> info@mistiAlpaca.com > 1-888-776-9276.

This pattern has been tested for accuracy, Misti International, however, cannot accept responsibility for typographical errors or misinterpretation of instructions.