



# Misti Alpaca Tonos Worsted

50% Baby Alpaca 50% Merino Wool, 218 yards/200 meters

4 ply worsted weight

100 grams per hank, 10 Hank Pack

Suggested needle size: 5 stitches per inch on US 7

TONOS Worsted, Hand Paint Tone on Tone: Delightful blend of Misti Baby Alpaca and fine Merino Wool excellent for a plethora of projects!

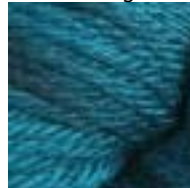
TW02 Marcasite



TW06 Muir Woods



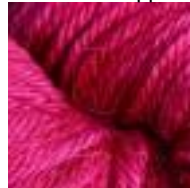
TW07 Tealing Blue



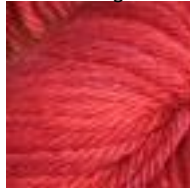
TW09 Atlantis



TW10 Pink Sapphire



TW11 Shanghai Wedding



TW12 Impossibleblue



TW13 Copper Penny



TW14 Purplelicious



TW16 Siberian Iris



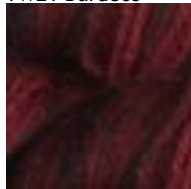
TW18 Velvet Underground



TW20 Honeysuckle



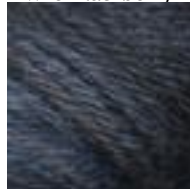
TW21 Burdeos



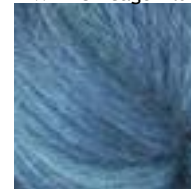
TW22 Sangria



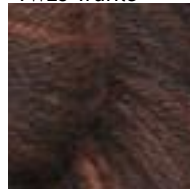
TW23 Blackberry



TW24 Chicago Blues



TW25 Truffle



TW26 Old Bronze



TW27 Maize



TW28 Sillar

