



# Misti Alpaca Tonos Chunky

50% Baby Alpaca 50% Merino Wool,  
109 yards/100 meters 100 grams per hank,  
2 ply chunky weight  
Suggested needle size: 3.5 stitches per inch on US 10

Misti TONOS Chunky, is hand painted with subtle tones of harmonious color creating a delightful chunky tone on tone hand paint collection.

TTC01 Lord of the Reds



TTC02 Uva



TTC03 Impossiblue



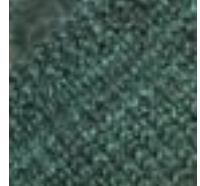
TTC04 Aquarius



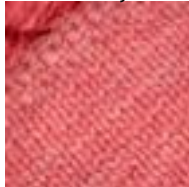
TTC07 Dark Salmon



TTC18 Velvet Underground



TTC20 Honeysuckle



TTC21 Burdeos



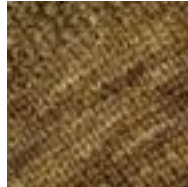
TTC23 Blackberry



TTC25 Truffle



TTC26 Old Bronze



TTC28 Sillar



TTC29 Tealing Blue



TTC30 Pink Sapphire

