



Misti Alpaca Tonos Pima Silk

83% Pima Cotton & 17% Silk

DK weight, 5 Hank Pack: 100 grams each, 327 yards/300 meters

Suggested Needle size: 5 to 5½ sts per inch on US 4 to 6

Tonos Pima Silk DK: The perfect blend of Pima Cotton and Silk in a DK weight.
This collection is designed with a unique tone on tone technique,
and coordinates with the Misti Pima Silk Hand Paint collection.

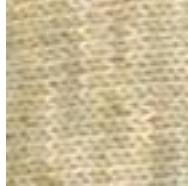
TPS02 Strawberry Jam



TPS03 Night Sea



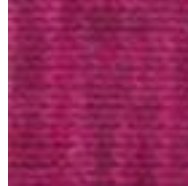
TPS04 Shell Beach



TPS09 Bahama



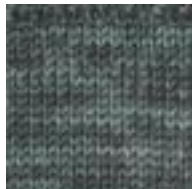
TPS11 Berry Rich



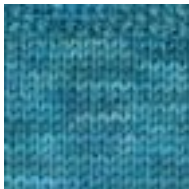
TPS16 Siberian Iris



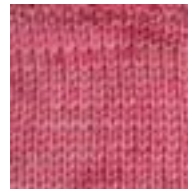
TPS18 Velvet Underground



TPS19 Tealing Blue



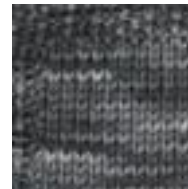
TPS20 Honeysuckle



TPS21 Burdeos



TPS23 Blackberry



TPS25 Truffle

